

# ADATTATORI VARILOCK

TOOL HOLDER FOR VARILOCK SYSTEM



**ATTACCO BASE TC-SK  
DIN69871**

*MODULAR BASIC MOUNTING FOR  
TC-SK DIN69871*



**ATTACCO BASE BT MAS 403 /  
JIS6399**

*MODULAR BASIC MOUNTING FOR BT  
MAS 403 / JIS6399*



**ATTACCO BASE PER HSK DIN  
63893**

*MODULAR BASIC MOUNTING FOR  
HSK DIN 63893*



**PROLUNGHE MODULARI  
MODULAR EXTENSIONS ADAPTERS**



**ADATTATORI MODULARI PER  
WELDON**  
*MODULAR END MILL ADAPTERS*



**ADATTATORI MODULARI PER  
FRESE**  
*MODULAR SHELL END MILL  
HOLDERS*

# ATTACCO BASE TC-SK DIN69871

## MODULAR BASIC MOUNTING FOR TC-SK DIN69871

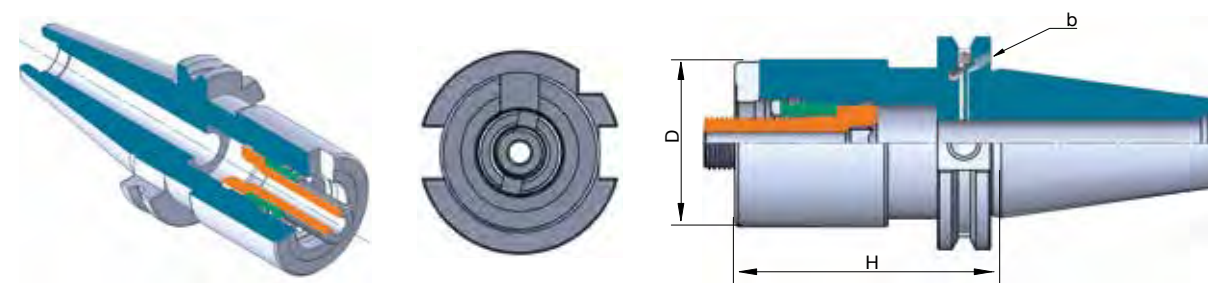
### CARATTERISTICHE / SPECIFICATION / CARACTÉRISTIQUES/ TECHNISCHE DATEN

- CARATTERISTICHE TECNICHE**
- Costruiti in acciaio certificato in barre
  - Eseguiti trattamenti termici da fornitori certificati ISO 9001
  - Rettificati di precisione esternamente, internamente e nelle filettature delle ghiera chiudipinza
  - Controllati con strumenti di misura certificati
  - La tolleranza di precisione dei coni VARILOCK è AT2
  - L'errore di concentricità massimo tra il cono e la sede utensile è 0.003 mm.

- TECHNICAL FEATURES**
- Manufactured with certificate steel
  - Heat treatments are performed by certified suppliers ISO 9001
  - Precision ground on shank, inside tapers and collet nut threads
  - Tested with high precision inspection and gaging equipment
  - Taper accuracy of TOOLHOLDER FOR VARILOCK SYSTEM lower than AT2
  - The maximum error of concentricity between the cone and the seat of tool is 0.003 mm.

- CARACTÉRISTIQUES**
- Fabriqués en bar d'acier certifié.
  - Réalisation du traitement thermique par des fournisseurs certifiés ISO 9001.
  - Rectification de précision extérieurement, intérieurement et dans les filetages des écrous serre-pince.
  - Contrôlés par des instruments de mesure certifiés.
  - La tolérance de précision des cônes VARILOCK est AT2.
  - L'erreur de concentricité maximum entre le cône et le siège de l'outil est de 0.003 mm.

- MERKMALE**
- Gebaut aus zertifiziertem Stabstahl
  - Warmbehandlungen von Lieferanten mit Zeugnis ISO 9001
  - Genauigkeitgeschliffen aussen, innen und in den Gewinden der Spannmutter für den Zangenverschluss
  - Geprüft mit zertifizierten Messinstrumente
  - Die Präzisionstoleranz der VARILOCK ist AT2
  - Die max konzentrische Abweichung zwischen Konus und Werkzeugsitz ist 0.003 mm.

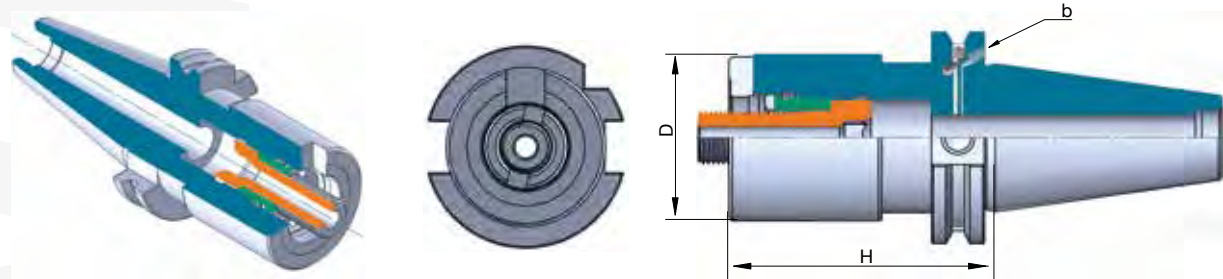


### ATTACCO BASE TCB40 - MODULAR BASIC COUNTING FOR SKB40

Cod.	TYPE	AT2	G6.3/12000	AD/B
		H	D	
SKB.40.27.VAR50	TC40-SK40 DIN69871 H27 VARILOCK50	27	50	
SKB.40.50.VAR50	TC40-SK40 DIN69871 H50 VARILOCK50	50	50	
SKB.40.27.VAR63	TC40-SK40 DIN69871 H27 VARILOCK63	27	63	
SKB.40.50.VAR63	TC40-SK40 DIN69871 H50 VARILOCK63	50	63	

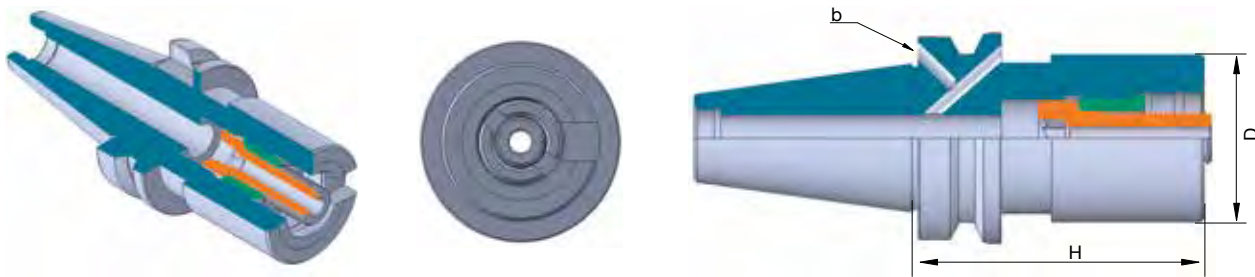
# ATTACCO BASE BT MAS 403 / JIS6399

MODULAR BASIC MOUNTING FOR  
BT MAS 403 / JIS6399



## ATTACCO BASE TCB50 - MODULAR BASIC COUNTING FOR SKB50

Cod.	TYPE	AT2		G6.3/12000		AD/B	
		H	D	H	D	H	D
SKB.50.27.VAR50	TC50-SK50 DIN69871 H27 VARILOCK50	27	50				
SKB.50.50.VAR50	TC50-SK50 DIN69871 H50 VARILOCK50	50	50				
SKB.50.27.VAR63	TC50-SK50 DIN69871 H27 VARILOCK63	27	63				
SKB.50.50.VAR63	TC50-SK50 DIN69871 H50 VARILOCK63	50	63				
SKB.50.27.VAR80	TC50-SK50 DIN69871 H27 VARILOCK80	27	80				
SKB.50.50.VAR80	TC50-SK50 DIN69871 H50 VARILOCK80	50	80				

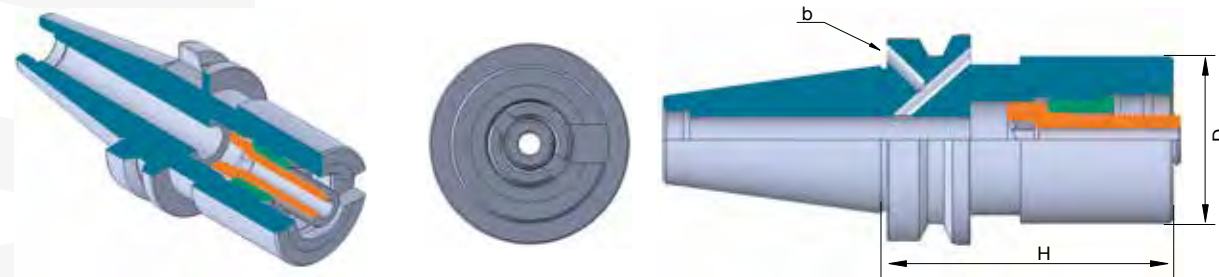


## ATTACCO BASE BTB40 - MODULAR BASIC COUNTING FOR BTB40

Cod.	TYPE	AT2		G6.3/12000		AD/B	
		H	D	H	D	H	D
BTB.40.27.VAR50	BTB40 MAS403 H27 VARILOCK50	27	50				
BTB.40.50.VAR50	BTB40 MAS403 H50 VARILOCK50	50	50				
BTB.40.27.VAR63	BTB40 MAS403 H27 VARILOCK63	27	63				
BTB.40.50.VAR63	BTB40 MAS403 H50 VARILOCK63	50	63				

# ATTACCO BASE PER HSK DIN 63893

MODULAR TOOL HOLDERS VARILOCK SYSTEM  
SUPPLIED WITH COOLING TUBE



## ATTACCO BASE BTB50 - MODULAR BASIC COUNTING FOR BTB50

Cod.	TYPE	AT2		G6.3/12000		AD/B	
		H	D	H	D	H	D
BTB.50.50.VAR50	BTB50 MAS403 H50 VARILOCK50	50	50				
BTB.50.50.VAR63	BTB50 MAS403 H50 VARILOCK63	50	63				
BTB.50.50.VAR80	BTB50 MAS403 H50 VARILOCK80	50	80				



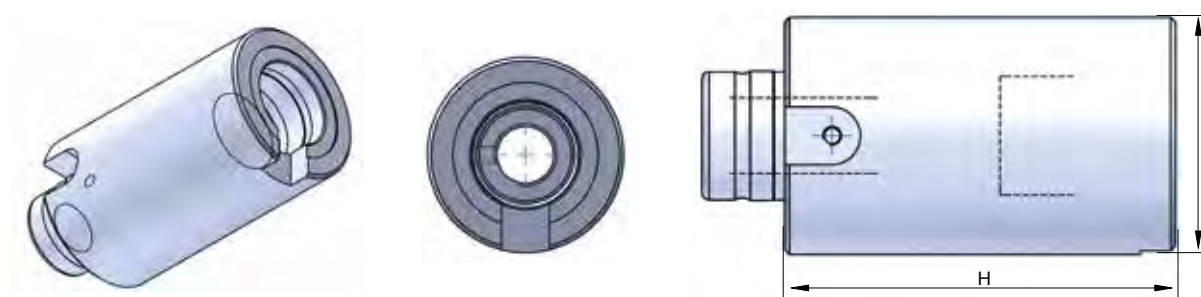
## ATTACCO BASE PER HSK63A - MODULAR BASIC MOUNTING FOR HSK63A

Cod.	TYPE	AT2		G6.3/12000	
		H	D	H	D
HSK.A.63.80.VAR50	HSK63A H80 VARILOCK 50	80	50		
HSK.A.63.90.VAR63	HSK63A H90 VARILOCK 63	90	63		



# PROLUNGHE MODULARI

## MODULAR EXTENSIONS ADAPTERS



### PROLUNGHE MODULARI - MODULAR EXTENSIONS ADAPTERS - VARILOCK 50

Cod.	TYPE	H	D
VAR50.60.VAR50	VARILOCK50 H63 VARILOCK 50	63	50
VAR50.100.VAR50	VARILOCK50 H100 VARILOCK 50	100	50

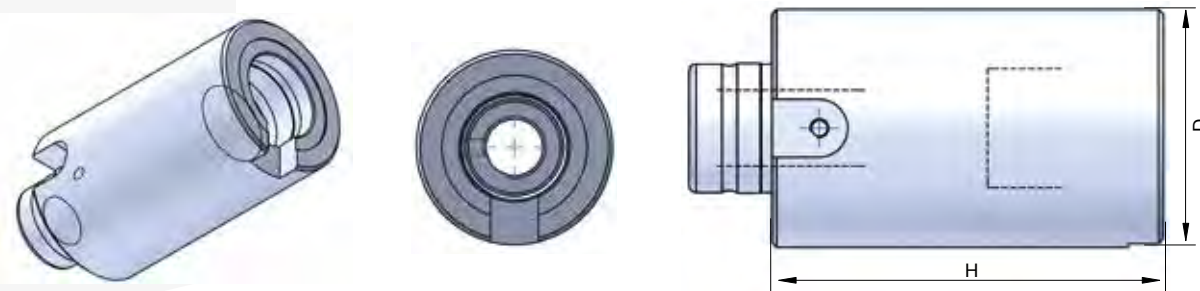


### ATTACCO BASE PER HSK63A - MODULAR BASIC MOUNTING FOR HSK100A

Cod.	TYPE	G6.3/12000	
		AT2	
HSK.A.100.85.VAR50	HSK100A H85 VARILOCK 50	85	50
HSK.A.100.95.VAR63	HSK100A H95 VARILOCK 63	95	63
HSK.A.100.95.VAR80	HSK100A H95 VARILOCK 80	95	80

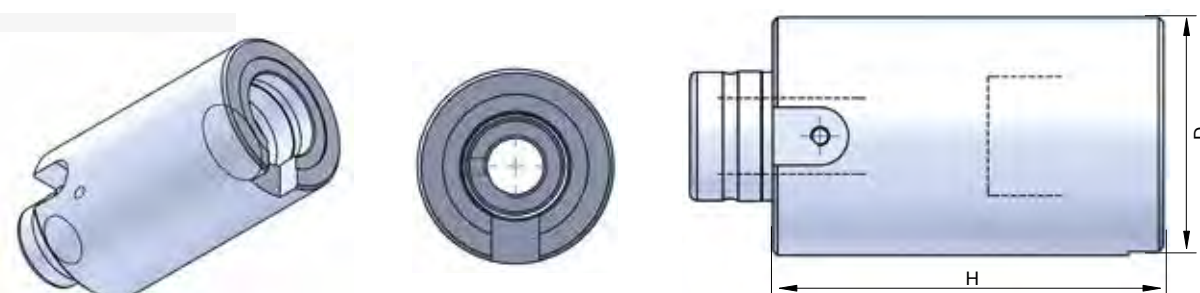
# ADATTATORI MODULARI PER WELDON

## MODULAR END MILL ADAPTERS



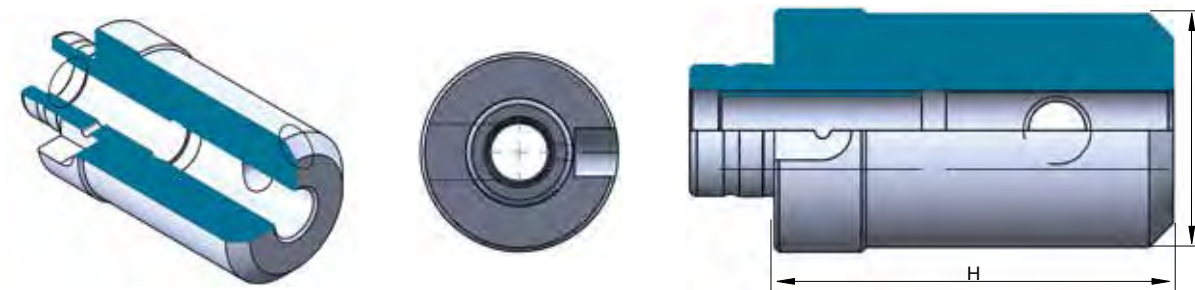
### PROLUNGHE MODULARI - MODULAR EXTESIONS ADAPTERS - VARILOCK 63

Cod.	TYPE	H	D
VAR63.80.VAR63	VARILOCK63 H80 VARILOCK 63	80	63
VAR63.120.VAR63	VARILOCK63 H120 VARILOCK 63	120	63



### PROLUNGHE MODULARI - MODULAR EXTESIONS ADAPTERS - VARILOCK 80

Cod.	TYPE	H	D
VAR80.80.VAR80	VARILOCK63 H80 VARILOCK 80	80	80

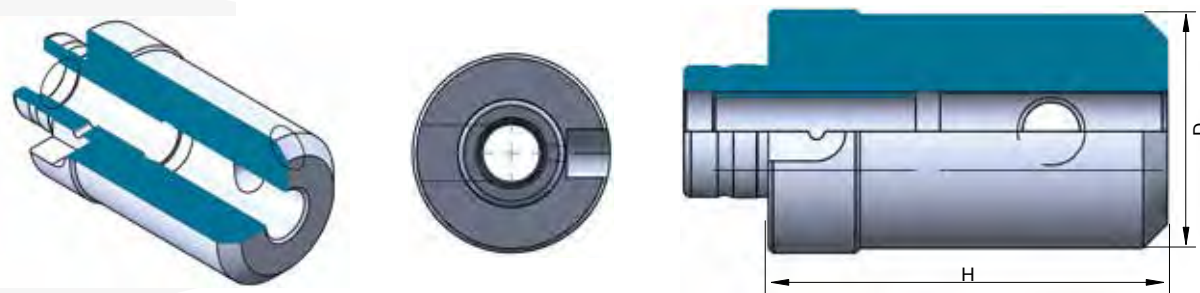


### ADATTATORI MODULARI WELDON - MODULAR END MILL ADAPTERS - VAR50

Cod.	TYPE	H	D
VAR50.50.WE6	VARILOCK50 H50 WELDON6	50	6
VAR50.50.WE8	VARILOCK50 H50 WELDON8	50	8
VAR50.50.WE10	VARILOCK50 H50 WELDON10	50	10
VAR50.60.WE12	VARILOCK50 H60 WELDON12	60	12
VAR50.60.WE14	VARILOCK50 H60 WELDON14	60	14
VAR50.60.WE16	VARILOCK50 H60 WELDON16	60	16
VAR50.60.WE18	VARILOCK50 H60 WELDON18	60	18
VAR50.60.WE20	VARILOCK50 H60 WELDON20	60	20

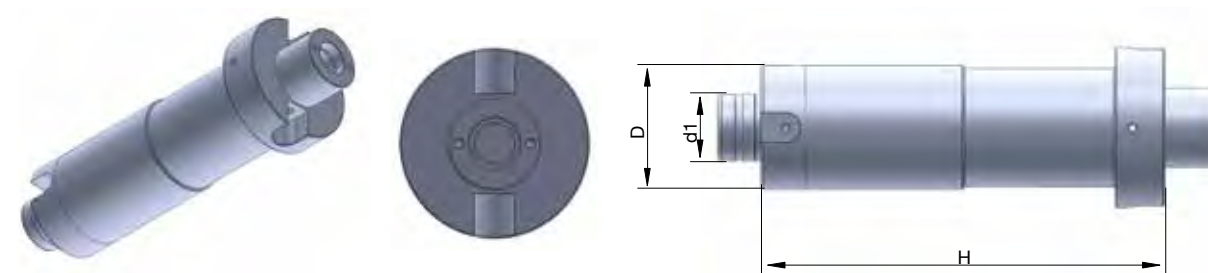
# ADATTATORI MODULARI PER FRESE

## MODULAR SHELL END MILL HOLDERS



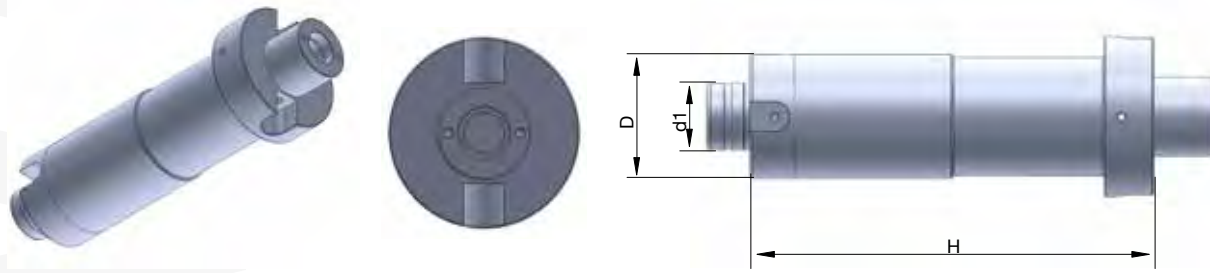
### ADATTATORI MODULARI WELDON - MODULAR END MILL ADAPTERS - VAR63

Cod.	TYPE	H	D
VAR63.70.WE6	VARILOCK63 H70 WELDON6	70	6
VAR63.70.WE8	VARILOCK63 H70 WELDON8	70	8
VAR63.70.WE10	VARILOCK63 H70 WELDON10	70	10
VAR63.70.WE12	VARILOCK63 H70 WELDON12	70	12
VAR63.70.WE14	VARILOCK63 H70 WELDON14	70	14
VAR63.70.WE16	VARILOCK63 H70 WELDON16	70	16
VAR63.70.WE18	VARILOCK63 H70 WELDON18	70	18
VAR63.70.WE20	VARILOCK63 H70 WELDON20	70	20
VAR63.80.WE25	VARILOCK63 H80 WELDON25	80	25
VAR63.80.WE32	VARILOCK63 H80 WELDON32	80	32



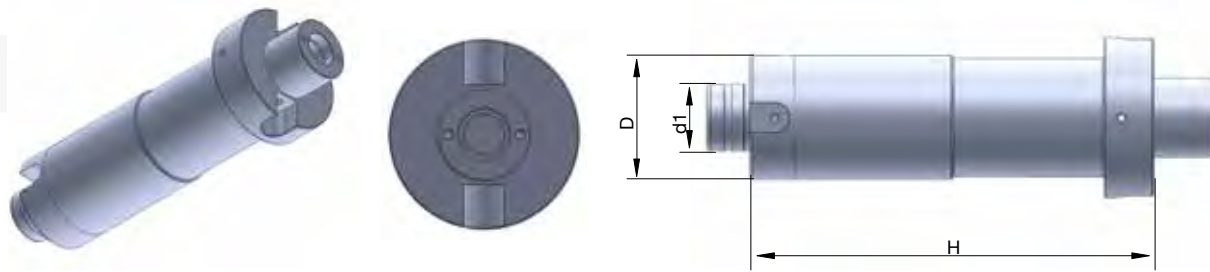
### ADATTATORI MODULARI PORTA FRESE - MODULAR SHELL END MILL HOLDERS - VAR50

Cod.	TYPE	D	H	d1
VAR50.30.D16S	VARILOCK50 H30 D16S	50	30	16
VAR50.20.D22S	VARILOCK50 H20 D22S	50	20	22
VAR50.20.D27S	VARILOCK50 H20 D27S	50	20	27
VAR50.25.D32S	VARILOCK50 H25 D32S	50	25	32
VAR50.25.D40S	VARILOCK50 H25 D40S	50	25	40



### ADATTATORI MODULARI PORTA FRESE - MODULAR SHELL END MILL HOLDERS - VAR63

Cod.	TYPE	D	H	d1
VAR63.40.D16S	VARILOCK63 H40 D16S	63	40	16
VAR63.30.D22S	VARILOCK63 H30 D22S	63	30	22
VAR63.30.D27S	VARILOCK63 H30 D27S	63	30	27
VAR63.30.D32S	VARILOCK63 H30 D32S	63	30	32
VAR63.30.D40S	VARILOCK63 H30 D40S	63	30	40



### ADATTATORI MODULARI PORTA FRESE - MODULAR SHELL END MILL HOLDERS - VAR80

Cod.	TYPE	D	H	d1
VAR80.30.D22S	VARILOCK80 H30 D22S	80	30	22
VAR80.30.D27S	VARILOCK80 H30 D27S	80	30	27
VAR80.30.D32S	VARILOCK80 H30 D32S	80	30	32
VAR80.30.D40S	VARILOCK80 H30 D40S	80	30	40